



# TRANSPORTATION IMPROVEMENT PROGRAM

FY 2009 – FY 2012

DRAFT  
March 25, 2008

# AMES AREA METROPOLITAN PLANNING ORGANIZATION

## 2009-12 TRANSPORTATION IMPROVEMENT PROGRAM

### **Project Selection**

The AAMPO Policy Committee adopted a project rating criteria system as a means of ranking submitted projects. The highest-ranking projects were then presented to the Technical Committee for review and recommendation. A recommendation was then passed on to the Policy Committee for action. Enhancement projects consist of open space trails that have been approved by the bike users and the Parks and Recreation Department.

All highway and enhancement projects are also available for public review and comment through the City of Ames Capital Improvement Plan process. This involves public presentations and a formal public hearing before the Ames City Council.

The Transit Board has approved transit projects from CyRide.

### **Status of Previously Approved Projects**

The Federal Fiscal Year 2008 highway element project, as approved in the 2008-2011 STIP, is the reconstruction of North Dakota Avenue from 600' south of Delaware Avenue to Ontario Street. This project will be designed during calendar year 2008 and then let by IDOT for construction during the summer of 2009.

The FY2008 enhancement element project is a shared use path along the west side of Skunk River from SE 16<sup>th</sup> Street to east Lincoln Way. This project will be designed during calendar year 2008 and then let by IDOT for construction during the summer of 2009.

### **Fiscal Constraint**

The AAMPO FY 2009 programming targets are \$1,039,606 for the highway element and \$79,957 for the enhancement element. As noted in the TIP, the requested Federal funds for highway and enhancement elements will fully utilize the target amounts. The Ames City Council has programmed these projects in the City of Ames 2008-2013 Capital Improvement Plan for local funding allocation.

The Transit program does not have targets and thus the requests involve significant costs in the anticipation of maximizing the amounts received.

## **Public Participation Process**

A notice advising the public about the draft TIP and TPWP reviewed by the AAMPO Technical Committee will be mailed to 43 neighborhood organization chairpersons, representatives of the Ames Main Street District, Campustown Action Association, NAACP, Friends of Central Iowa Biking, International Student Council at ISU, League of Women Voters and others in accordance with our approved Public Participation Plan. In addition, as previously noted, projects are available for public review and comment through the City of Ames Capital Improvement Plan process

## **Self Certification**

The Ames Area Metropolitan Planning Organization (AAMPO) recently was involved in a transportation planning review with FHWA and FTA on May 8, 2007. A report was issued jointly by these agencies on July 23, 2007, confirming that transportation planning activities in the Ames metropolitan area are being carried out in accordance with governing Federal regulations, policies and procedures.

## **Network Operations and Management**

The capital investment and other measures necessary to preserve the existing transportation system, as well as operations, maintenance, modernization, and rehabilitation of existing and future transportation facilities are annually reviewed and programmed. Preservation, operating, and maintenance costs are included as a priority for funding. Maintenance and rehabilitation projects are also included in the AAMPO Long Range Transportation Plan. In addition to STP funding, the City of Ames utilizes Road Use Tax, Local Option Sales Tax, and General Obligation funding for system preservation projects. A new program was added to the City of Ames 2008-2013 CIP to address shared use path maintenance. The LRTP and LUPP both use an intersection efficiency standard of LOS C.

## FY 2009 TIP FTA Project Justification

The following transit projects identified within the draft FY2009-2012 TIP were included within the 2009-2012 Passenger Transportation Development Plan (PTDP) meeting the requirements to have all federal and state transit funding within an approved PTDP prior to TIP approval.

## **General Operations**

General Operations: This funding supports the day to day transit operations of the Ames Transit Authority from Ames' urbanized area federal apportionment, Transit Intensive Cities and State Transit Assistance funding.

## **Job Access & Reverse Commute**

Commercial/Industrial Area (East 13<sup>th</sup> Street/Lincoln Way/Dayton Avenue): A new route would be added traveling to the E. 13 Street/Lincoln Way/Dayton Avenue commercial/industrial area of Ames. Service would be provided to businesses such as 3M, Mainstream Living, Mary Greeley Dialysis, Sauer-Danfoss as well as a new proposed Life Style Center tentatively scheduled to open in spring 2009. Service to this area was a priority within the Passenger Transportation Development Plan process.

Brown Route Frequency/Hours Expansion: Last year, CyRide added additional service between campus and North Grand Mall based on demand in the Somerset area during the summer weekdays and weekday nights during the remainder of the year. Weekday nights improved to 40-minute frequencies until 9:00pm instead of ending at 7:00 pm and Weekday Summer service doubled to 20-minutes. This would provide a second year of service for this expanded service.

Yellow Route Expansion: Last year, CyRide added mid-day service hours to its Yellow Route to the southeast area of Ames. This route operated every 60 minutes alternating between the current Gray Route and this southeast area allowing connections directly to ISU campus instead of transferring at Ames City Hall. Before, only one mid-day trip currently operated to this area. This would provide a second year of service for this additional mid-day service.

## **New Freedom & CMAQ**

Heavy Duty Bus Expansion: These expansion vehicles would be purchased to provide buses for the new route serving the east side commercial/industrial area of Ames along Dayton Avenue. This service route was identified for Job Access Reverse Commute funding described above. The buses would be 40' heavy-duty hybrid vehicles. In order for the service to be operational by spring 2009, the buses would need to be ordered in 2008.

## **Elderly and Persons with Disabilities Program**

Contracted Paratransit (Dial-A-Ride) Service: According to federal regulations, each public transit agency providing fixed-route transit service in their community must also provide door-to-door transportation service within a ¼ mile area of that fixed-route service. Therefore, CyRide purchases transportation service for its Dial-A-Ride operations in order to meet this ADA requirement. This requirement has been expanded to the entire Ames' city limits.

Transit Amenities: Currently, staff is in process of developing a Bus Stop Plan that will recommend an implementation plan for bus stop amenities along CyRide's fixed-route system. From the prioritization of recommended stop improvements, bus shelters will either be added or replaced to improve CyRide's image throughout the Ames community.

### **Replacement Buses and Bus Equipment:**

Hybrid Heavy Duty Bus Expansion: Two vehicles have been requested from the newly established Iowa Power Fund and another twelve from a 2009 congressional earmark request for expansion of CyRide's fleet. As a result of receiving these vehicles, CyRide could then dispose of vehicles within its inactive and contingency fleets operated only in times when unforeseen ridership occurs. According to the Federal Transit Administration, these vehicles do not count towards CyRide's active fleet. However, CyRide keeps these vehicles when demand is warranted for additional service during peak times. These expansion vehicles would be ADA accessible.

Heavy Duty Bus Replacement: Thirteen buses have exceeded FTA guidelines for useful life. Bus numbers are 926, 927, 933, 934, 941, 942, 943, 967, 980, 981, 983, 985, and 990. These units will be replaced with 40' heavy-duty buses, equipped with cameras. These replacement vehicles will be ADA accessible.

Light Duty Bus Replacement: Three buses have exceeded FTA guidelines for their useful life. Bus numbers are 949, 960, and 961. These units will be replaced with 158" light duty diesel buses, equipped with cameras, and will be ADA accessible.

ADA Compliance: Replacement buses will be accessible and are part of the CyRide ADA plan. CyRide is in compliance with ADA regulations and the other elements of the TIP are not related to ADA implementation.

### **Security: Human Health/Safety Threats**

Scissor Lift for Shop/Maintenance: Existing service worker lift for overhead facilities maintenance is at the end of its useful life. The lift has become unreliable and does not meet current safety standards.

Facility Cameras/Proximity Card Access: Purchase 20 cameras for digital recording of the transit property as well as a proximity card access system to monitor access to the facility. Guests within the facility would be restricted to administrative areas unless accompanied by a CyRide employee. These security improvements were recommended by Homeland Security to secure the entire CyRide campus.

Steam clean area; Hoist and Floor Repair: The steam clean area of CyRide's garage is in need of repair. The floors and walls have structural damage showing deep cracks in the foundation and vertical structure of the maintenance garage. This "steam clean" area is utilized to hoist vehicles into the air and then steam the underside of the bus to remove salt, sand and oil residue prior to maintenance work commencing. Grant funding would be requested from Iowa's new Infrastructure funding for the structural repair of the walls and floor with CyRide's direct earmark funding replacing the existing in-ground hoist if needed based on a facility study to be completed in August 2008.

### **Direct Earmarks**

Alternative Analysis Study – Orange Route: An Alternatives Analysis (AA) Study will be conducted of the Iowa State Center to Iowa State University campus corridor identified currently as the Orange Route. The Ames Transit Agency recently completed a smaller Transit Feasibility Study looking at seven corridors in the community that had either current transportation/growth issues or future identified growth. The study identified transportation options to resolve corridor problems of which the Orange Route is operating at near maximum capacity. It was determined through the Transit Feasibility Study that the Orange Route may qualify for Small New Starts funding to establish a Bus Rapid Transit corridor which would operate more like a light rail type system only using more cost-efficient buses. The AA study will analyze specific route options in more depth regarding transit-only corridors, provide detailed information on bus stop upgrades, and analyze route speed increases that could be realized with extended-green technology. This study will also analyze the financial capacity/needs of the Ames community to undertake a project such as Bus Rapid Transit. At the conclusion of the AA Study, a locally preferred alternative – the "proposed action" – will be determined.

Garage Rehabilitation and Expansion, Phase III: A feasibility study was completed in November 2001 that provided for a three Phase expansion and modernization of the CyRide maintenance and office facility. The first phase was completed in December 2003. The second phase, constructing a new administrative area, will be complete in April 2008. CyRide is expecting a final 2009 earmark through SAFTEA-LU under current authorization to further update the maintenance garage. The particular project will be determined after the facilities study is complete this fall.

Federal Highway

Administration

Section

Surface Transportation Program

And

Transportation Enhancement

# AMES AREA METROPOLITAN PLANNING ORGANIZATION

## FEDERAL FISCAL YEARS 2009-2012 TRANSPORTATION IMPROVEMENT PROGRAM

### NEW PROJECT INFORMATION FORM

Project Sponsor Government: City of Ames

Federal Funding Source:

- Surface Transportation Program  
 Highway Bridge Replacement and Rehabilitation Program

Federal Fiscal Year:

- Federal Fiscal Year 2009 (October 1, 2008 – September 30, 2009)  
 Federal Fiscal Year 2010 (October 1, 2009 – September 30, 2010)  
 Federal Fiscal Year 2011 (October 1, 2010 – September 30, 2011)  
 Federal Fiscal Year 2012 (October 1, 2011 – September 30, 2012)

Route or Street Name: Area Wide

Termini: \_\_\_\_\_

Bridge Number (For Bridge Projects Only): \_\_\_\_\_

Length: \_\_\_\_\_ miles

Type of Work: **Statewide Urban Design and Specifications Manual (SUDAS)**

Map (*Please include a map indicating project location.*)

### PROJECT COST INFORMATION

Total Estimated Cost: \$ 3,056

Federal-Aid: \$ 4,593

Local Match: \$ 0

Other: \$ ----



# AMES AREA METROPOLITAN PLANNING ORGANIZATION

## FEDERAL FISCAL YEARS 2009-2012 TRANSPORTATION IMPROVEMENT PROGRAM

### NEW PROJECT INFORMATION FORM

Project Sponsor Government: City of Ames

Federal Funding Source:

- Surface Transportation Program  
 Highway Bridge Replacement and Rehabilitation Program

Federal Fiscal Year:

- Federal Fiscal Year 2009 (October 1, 2008 – September 30, 2009)  
 Federal Fiscal Year 2010 (October 1, 2009 – September 30, 2010)  
 Federal Fiscal Year 2011 (October 1, 2010 – September 30, 2011)  
 Federal Fiscal Year 2012 (October 1, 2011 – September 30, 2012)

Route or Street Name: Area Wide

Termini: \_\_\_\_\_

Bridge Number (For Bridge Projects Only): \_\_\_\_\_

Length: \_\_\_\_\_ miles

Type of Work: **Pavement Management System**

Map (*Please include a map indicating project location.*)

### PROJECT COST INFORMATION

Total Estimated Cost: \$ 5,247

Federal-Aid: \$ 5,247

Local Match: \$ 0

Other: \$ ---

# AMES AREA METROPOLITAN PLANNING ORGANIZATION

## FEDERAL FISCAL YEARS 2009-2012 TRANSPORTATION IMPROVEMENT PROGRAM

### NEW PROJECT INFORMATION FORM

Project Sponsor Government: City of Ames

Federal Funding Source:

- Surface Transportation Program  
 Highway Bridge Replacement and Rehabilitation Program  
 Statewide Transportation Enhancement

Federal Fiscal Year:

- Federal Fiscal Year 2009 (October 1, 2008 – September 30, 2009)  
 Federal Fiscal Year 2010 (October 1, 2009 – September 30, 2010)  
 Federal Fiscal Year 2011 (October 1, 2010 – September 30, 2011)  
 Federal Fiscal Year 2012 (October 1, 2011 – September 30, 2012)

Route or Street Name: 13<sup>th</sup> Street

Termini: Union Pacific Railroad Overpass to Stange Road

Bridge Number (For Bridge Projects Only): \_\_\_\_\_

Length: 0.48 miles

Type of Work: **Pavement Rehabilitation**

Map (*Please include a map indicating project location.*)

### PROJECT COST INFORMATION

Total Estimated Cost: \$ 1,300,000

Federal-Aid (STP): \$ 1,032,000

Local Match: \$ 268,000

Other: \$ N/A

FY 09 - 13TH STREET



PROJECT LOCATION

13TH ST

STANGE RD

ONTARIO ST

DALEY DR

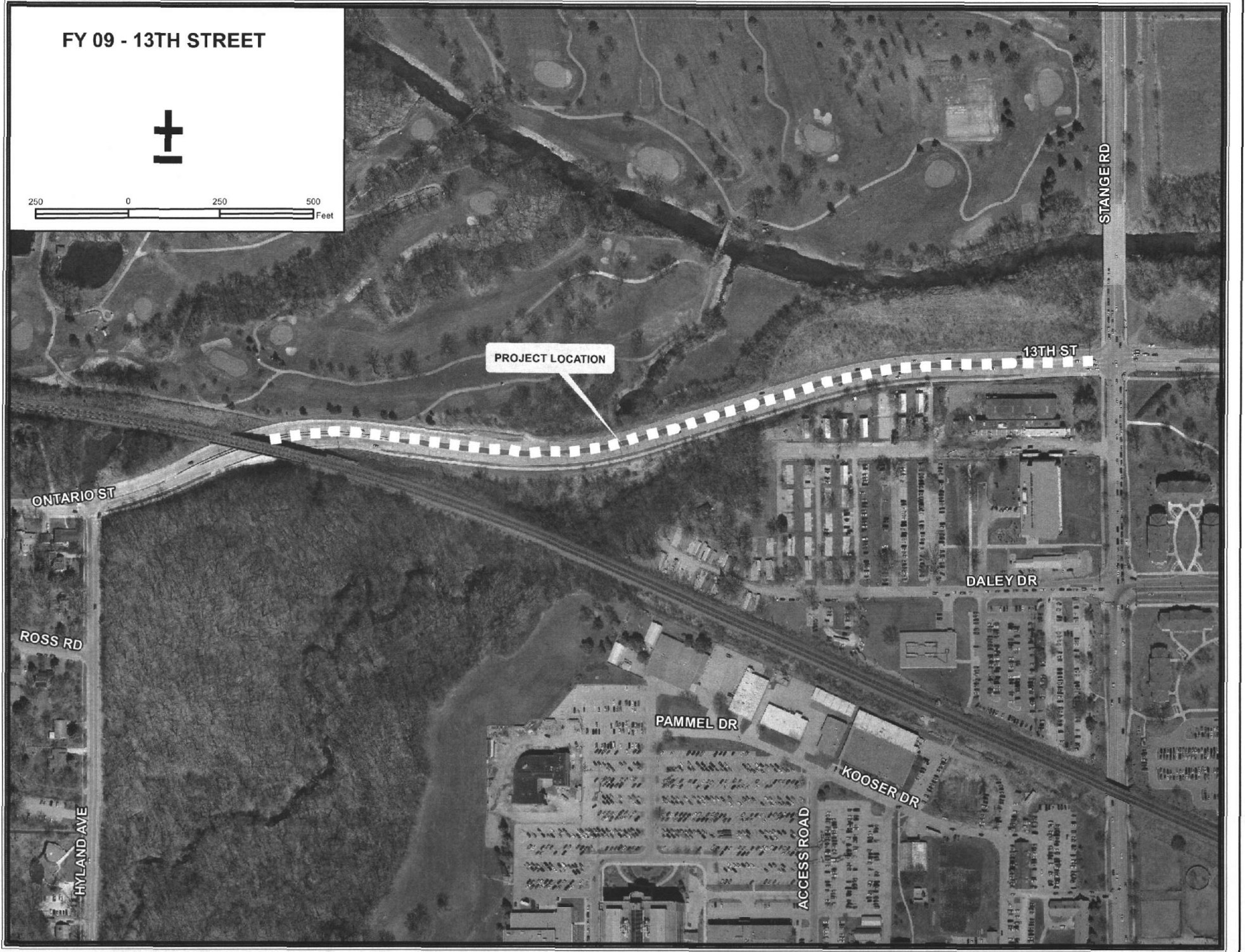
ROSS RD

PAMMEL DR

KOOSER DR

HYLAND AVE

ACCESS ROAD



# AMES AREA METROPOLITAN PLANNING ORGANIZATION

## FEDERAL FISCAL YEARS 2009-2012 TRANSPORTATION IMPROVEMENT PROGRAM

### NEW PROJECT INFORMATION FORM

Project Sponsor Government: City of Ames

Federal Funding Source:

- Surface Transportation Program  
 Highway Bridge Replacement and Rehabilitation Program

Federal Fiscal Year:

- Federal Fiscal Year 2009 (October 1, 2008 – September 30, 2009)  
 Federal Fiscal Year 2010 (October 1, 2009 – September 30, 2010)  
 Federal Fiscal Year 2011 (October 1, 2010 – September 30, 2011)  
 Federal Fiscal Year 2012 (October 1, 2011 – September 30, 2012)

Route or Street Name: Skunk River Trail

Termini: Hunziker Youth Sports Complex to Southeast 16<sup>th</sup> Street

Bridge Number (For Bridge Projects Only): \_\_\_\_\_

Length: 0.30 miles

Type of Work: **Bike Trail Paving**

Map (*Please include a map indicating project location.*)

### PROJECT COST INFORMATION

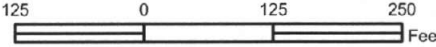
Total Estimated Cost: \$ 200,000

Federal-Aid (STP): \$ 80,000

Local Match: \$ 120,000

Other: \$ N/A

FY 09 - ENHANCEMENT  
SKUNK RIVER TRAIL



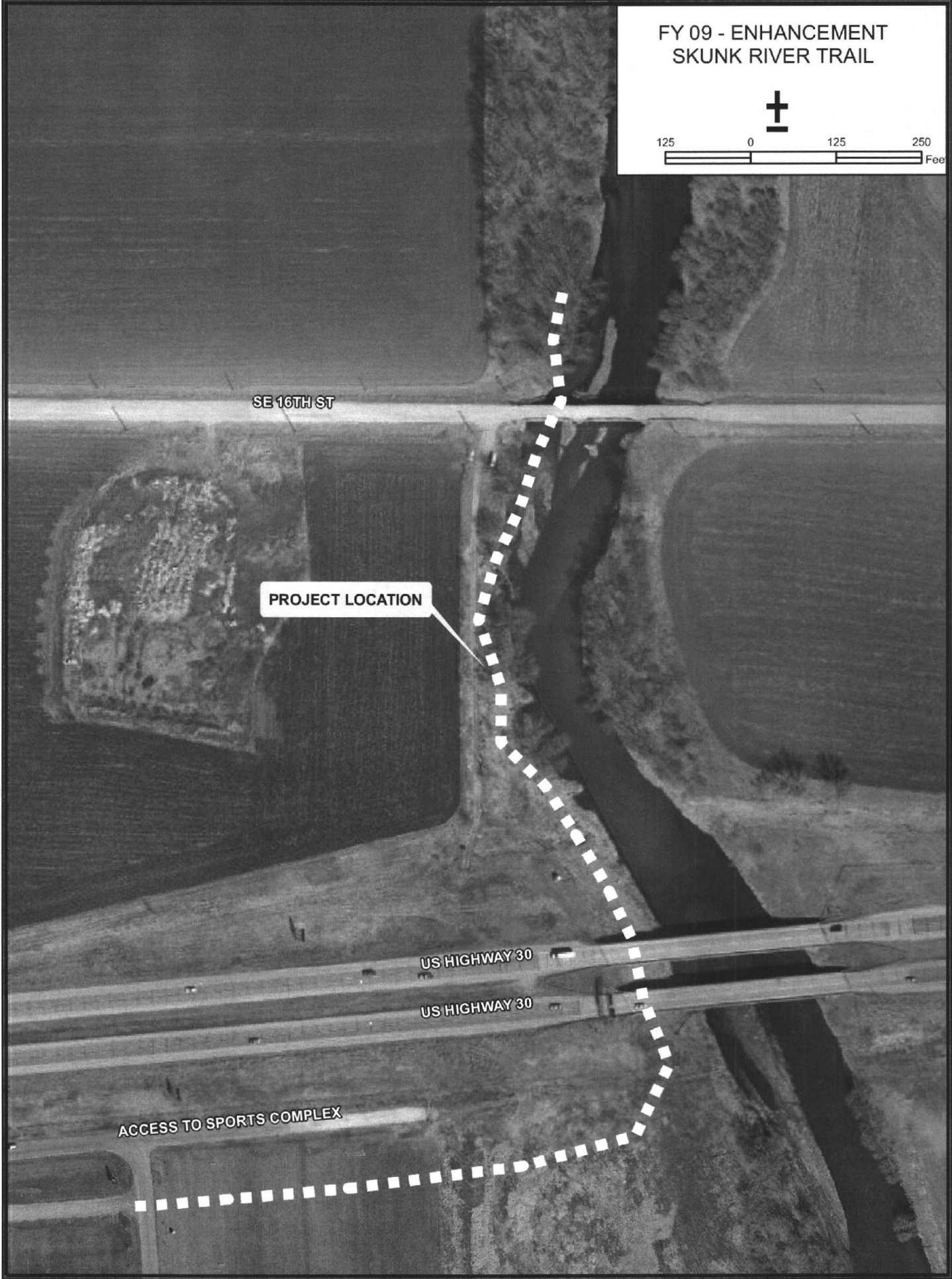
SE 16TH ST

PROJECT LOCATION

US HIGHWAY 30

US HIGHWAY 30

ACCESS TO SPORTS COMPLEX



# AMES AREA METROPOLITAN PLANNING ORGANIZATION

## FEDERAL FISCAL YEARS 2009-2012 TRANSPORTATION IMPROVEMENT PROGRAM

### NEW PROJECT INFORMATION FORM

Project Sponsor Government: City of Ames

Federal Funding Source:

- Surface Transportation Program  
 Highway Bridge Replacement and Rehabilitation Program  
 Statewide Transportation Enhancement

Federal Fiscal Year:

- Federal Fiscal Year 2009 (October 1, 2008 – September 30, 2009)  
 Federal Fiscal Year 2010 (October 1, 2009 – September 30, 2010)  
 Federal Fiscal Year 2011 (October 1, 2010 – September 30, 2011)  
 Federal Fiscal Year 2012 (October 1, 2011 – September 30, 2012)

Route or Street Name: Area Wide

Termini: \_\_\_\_\_

Bridge Number (For Bridge Projects Only): \_\_\_\_\_

Length: N/A miles

Type of Work: Long Range Transportation Plan Update (2035)

Map (*Please include a map indicating project location.*)

### PROJECT COST INFORMATION

Total Estimated Cost: \$ 400,000

Federal-Aid (STP): \$ 230,623

Local Match: \$ 80,000

Other: \$ 70,613 (FHWA PL)

\$ 18,764 (FTA 5303)

# AMES AREA METROPOLITAN PLANNING ORGANIZATION

## FEDERAL FISCAL YEARS 2009-2012 TRANSPORTATION IMPROVEMENT PROGRAM

### NEW PROJECT INFORMATION FORM

Project Sponsor Government: City of Ames

Federal Funding Source:

- Surface Transportation Program  
 Highway Bridge Replacement and Rehabilitation Program

Federal Fiscal Year:

- Federal Fiscal Year 2009 (October 1, 2008 – September 30, 2009)  
 Federal Fiscal Year 2010 (October 1, 2009 – September 30, 2010)  
 Federal Fiscal Year 2011 (October 1, 2010 – September 30, 2011)  
 Federal Fiscal Year 2012 (October 1, 2011 – September 30, 2012)

Route or Street Name: George W. Carver Avenue

Termini: Stange Road to Bloomington Road

Bridge Number (For Bridge Projects Only): \_\_\_\_\_

Length: 0.90 miles

Type of Work: Pavement Rehabilitation

Map (*Please include a map indicating project location.*)

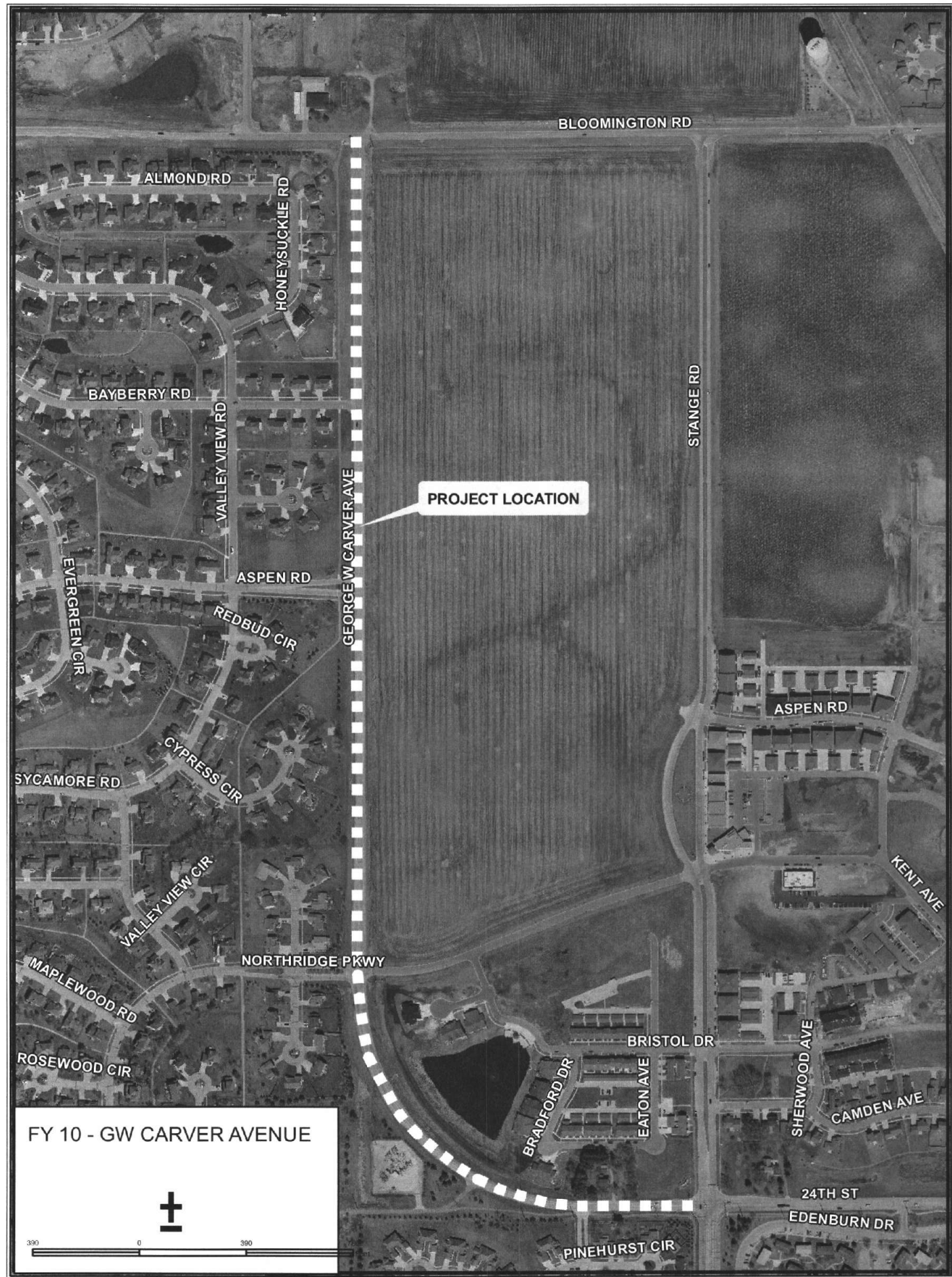
### PROJECT COST INFORMATION

Total Estimated Cost: \$ 860,000

Federal-Aid: \$ 688,000

Local Match: \$ 172,000

Other: \$ N/A



BLOOMINGTON RD

ALMOND RD

HONEYSUCKLE RD

BAYBERRY RD

VALLEY VIEW RD

ASPEN RD

REDBUD CIR

EVERGREEN CIR

SYCAMORE RD

CYPRESS CIR

VALLEY VIEW CIR

NORTHRIDGE PKWY

MAPLEWOOD RD

ROSEWOOD CIR

GEORGE W CARVER AVE

PROJECT LOCATION

STANGE RD

ASPEN RD

KENT AVE

BRISTOL DR

BRADFORD DR

EATON AVE

SHERWOOD AVE

CAMDEN AVE

24TH ST

EDENBURN DR

PINEHURST CIR

FY 10 - GW CARVER AVENUE



390 0 390



# AMES AREA METROPOLITAN PLANNING ORGANIZATION

## FEDERAL FISCAL YEARS 2009-2012 TRANSPORTATION IMPROVEMENT PROGRAM

### NEW PROJECT INFORMATION FORM

Project Sponsor Government: City of Ames

Federal Funding Source:

- Surface Transportation Program  
 Highway Bridge Replacement and Rehabilitation Program

Federal Fiscal Year:

- Federal Fiscal Year 2009 (October 1, 2008 – September 30, 2009)  
 Federal Fiscal Year 2010 (October 1, 2009 – September 30, 2010)  
 Federal Fiscal Year 2011 (October 1, 2010 – September 30, 2011)  
 Federal Fiscal Year 2012 (October 1, 2011 – September 30, 2012)

Route or Street Name: Skunk River Trail

Termini: E. 13<sup>th</sup> Street to Carr Pool

Bridge Number (For Bridge Projects Only): \_\_\_\_\_

Length: 0.40 miles

Type of Work: Bike Trail Paving

Map (*Please include a map indicating project location.*)

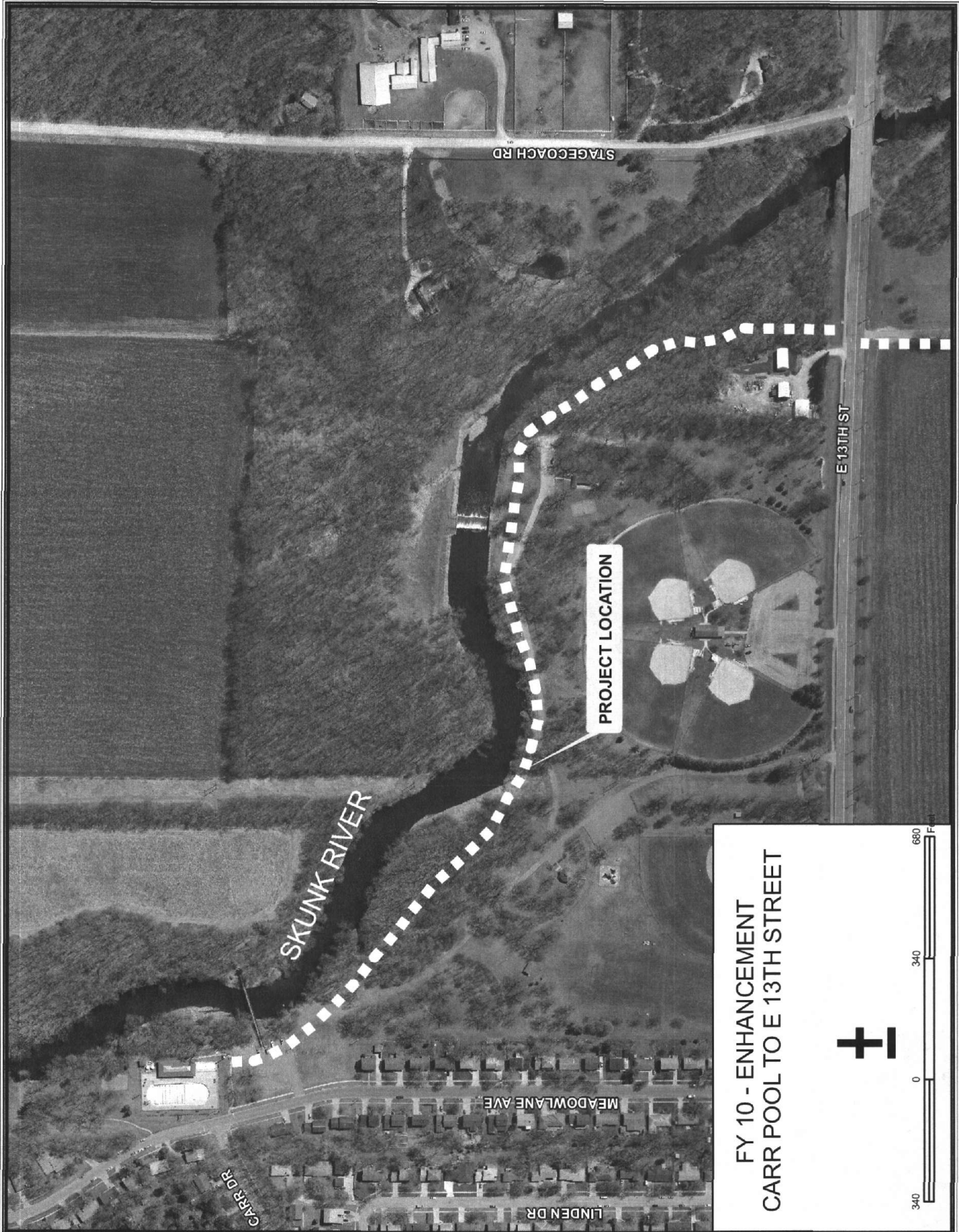
### PROJECT COST INFORMATION

Total Estimated Cost: \$ 225,000

Federal-Aid: \$ 80,000

Local Match: \$ 145,000

Other: \$ N/A



SKUNK RIVER

PROJECT LOCATION

CARR DR

MEADOWLANE AVE

LINDEN DR

STAGECOACH RD

E 13TH ST

FY 10 - ENHANCEMENT  
CARR POOL TO E 13TH STREET



# AMES AREA METROPOLITAN PLANNING ORGANIZATION

## FEDERAL FISCAL YEARS 2009-2012 TRANSPORTATION IMPROVEMENT PROGRAM

### NEW PROJECT INFORMATION FORM

Project Sponsor Government: City of Ames

Federal Funding Source:

- Surface Transportation Program  
 Highway Bridge Replacement and Rehabilitation Program

Federal Fiscal Year:

- Federal Fiscal Year 2009 (October 1, 2008 – September 30, 2009)  
 Federal Fiscal Year 2010 (October 1, 2009 – September 30, 2010)  
 Federal Fiscal Year 2011 (October 1, 2010 – September 30, 2011)  
 Federal Fiscal Year 2012 (October 1, 2011 – September 30, 2012)

Route or Street Name: Grand Avenue

Termini: South 16<sup>th</sup> Street to Squaw Creek Drive

Bridge Number (For Bridge Projects Only): \_\_\_\_\_

Length: 0.75 miles

Type of Work: Grade and Pave

Map (*Please include a map indicating project location.*)

### PROJECT COST INFORMATION

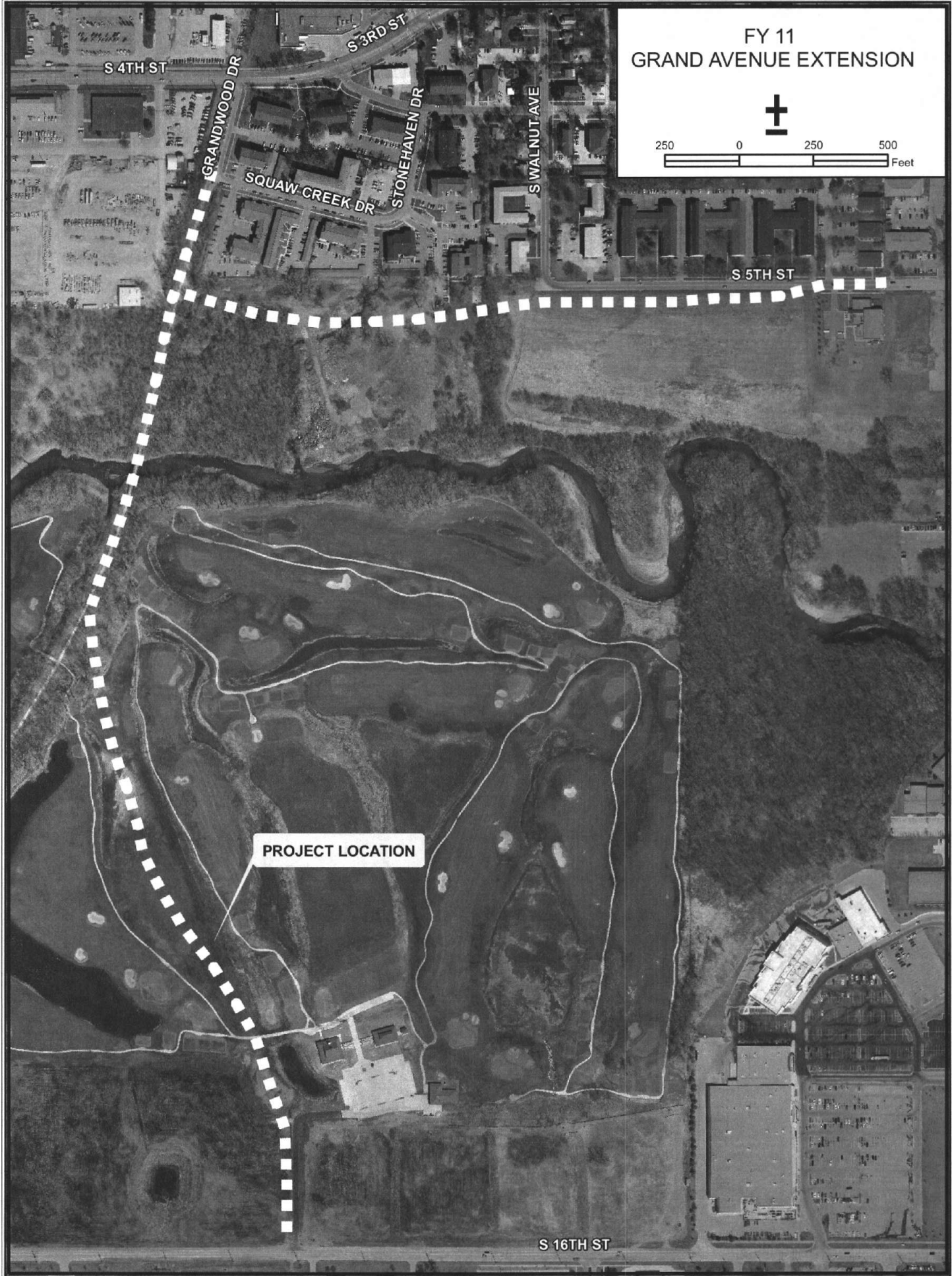
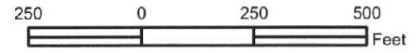
Total Estimated Cost: \$ 8,000,000

Federal-Aid: \$ 1,032,000

Local Match: \$ 1,968,000

Federal Earmark: \$ 5,000,000 (anticipated)

FY 11  
GRAND AVENUE EXTENSION



PROJECT LOCATION

S 16TH ST

# AMES AREA METROPOLITAN PLANNING ORGANIZATION

## FEDERAL FISCAL YEARS 2009-2012 TRANSPORTATION IMPROVEMENT PROGRAM

### NEW PROJECT INFORMATION FORM

Project Sponsor Government: City of Ames

Federal Funding Source:

- Surface Transportation Program  
 Highway Bridge Replacement and Rehabilitation Program

Federal Fiscal Year:

- Federal Fiscal Year 2009 (October 1, 2008 – September 30, 2009)  
 Federal Fiscal Year 2010 (October 1, 2009 – September 30, 2010)  
 Federal Fiscal Year 2011 (October 1, 2010 – September 30, 2011)  
 Federal Fiscal Year 2012 (October 1, 2011 – September 30, 2012)

Route or Street Name: **Skunk River Trail**

Termini: E. Lincoln Way to East 13<sup>th</sup> Street

Bridge Number (For Bridge Projects Only): \_\_\_\_\_

Length: 0.94 miles

Type of Work: Bike Trail Paving

Map (*Please include a map indicating project location.*)

### PROJECT COST INFORMATION

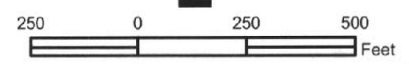
Total Estimated Cost: \$ 345,000

Federal-Aid: \$ 80,000

Local Match: \$ 265,000

Other: \$ N/A

FY 11 - ENHANCEMENT  
SKUNK RIVER TRAIL



E 13TH ST

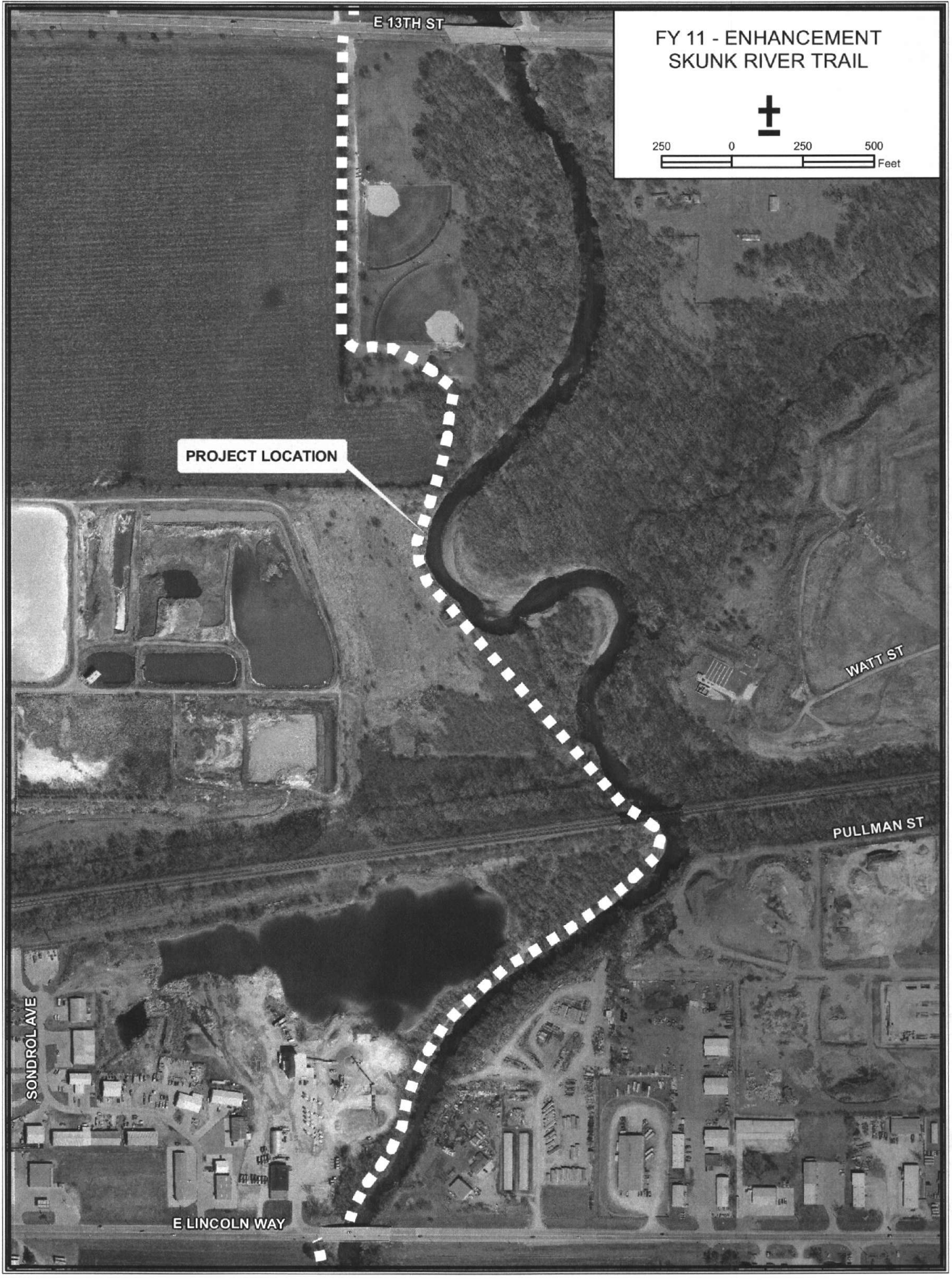
PROJECT LOCATION

WATT ST

PULLMAN ST

SONDROL AVE

E LINCOLN WAY



# AMES AREA METROPOLITAN PLANNING ORGANIZATION

## FEDERAL FISCAL YEARS 2009-2012 TRANSPORTATION IMPROVEMENT PROGRAM

### NEW PROJECT INFORMATION FORM

Project Sponsor Government: City of Ames

Federal Funding Source:

- Surface Transportation Program  
 Highway Bridge Replacement and Rehabilitation Program

Federal Fiscal Year:

- Federal Fiscal Year 2009 (October 1, 2008 – September 30, 2009)  
 Federal Fiscal Year 2010 (October 1, 2009 – September 30, 2010)  
 Federal Fiscal Year 2011 (October 1, 2010 – September 30, 2011)  
 Federal Fiscal Year 2012 (October 1, 2011 – September 30, 2012)

Route or Street Name: Lincoln Way

Termini: South Duff Avenue to South Skunk River

Bridge Number (For Bridge Projects Only): \_\_\_\_\_

Length: 0.72 miles

Type of Work: Pavement Rehabilitation

Map (*Please include a map indicating project location.*)

### PROJECT COST INFORMATION

Total Estimated Cost: \$ 860,000

Federal-Aid: \$ 688,000

Local Match: \$ 172,000

Other: \$ N/A

FY 12 - LINCOLN WAY



PROJECT LOCATION

20TH ST  
E 20TH ST  
PAULSON DR  
O'NEIL DR  
DOUGLAS AVE  
16TH ST  
E 16TH ST  
15TH ST  
14TH ST  
E 14TH ST  
13TH ST  
E 12TH ST  
11TH ST  
E 11TH ST  
10TH ST  
9TH ST  
E 9TH ST  
8TH ST  
7TH ST  
E 7TH ST  
6TH ST  
E 6TH ST  
5TH ST  
E 5TH ST  
MAIN ST  
E THIRD ST  
ALLEY  
LINCOLN WAY  
EAST AVE  
BORNE AVE

CARR DR  
GLENDALE AVE  
LINDEN DR  
MEADOWLANE AVE  
STAFFORD AVE  
MAXWELL AVE

STAGECOACH RD  
SONDROL AVE  
E LINCOLN WAY



# AMES AREA METROPOLITAN PLANNING ORGANIZATION

## FEDERAL FISCAL YEARS 2009-2012 TRANSPORTATION IMPROVEMENT PROGRAM

### NEW PROJECT INFORMATION FORM

Project Sponsor Government: City of Ames

Federal Funding Source:

- Surface Transportation Program  
 Highway Bridge Replacement and Rehabilitation Program

Federal Fiscal Year:

- Federal Fiscal Year 2009 (October 1, 2008 – September 30, 2009)  
 Federal Fiscal Year 2010 (October 1, 2009 – September 30, 2010)  
 Federal Fiscal Year 2011 (October 1, 2010 – September 30, 2011)  
 Federal Fiscal Year 2012 (October 1, 2011 – September 30, 2012)

Route or Street Name: **Skunk River Trail**

Termini: Inis Grove Park to Bloomington Road

Bridge Number (For Bridge Projects Only): \_\_\_\_\_

Length: 0.75 miles

Type of Work: Bike Trail Paving

Map (*Please include a map indicating project location.*)

### PROJECT COST INFORMATION

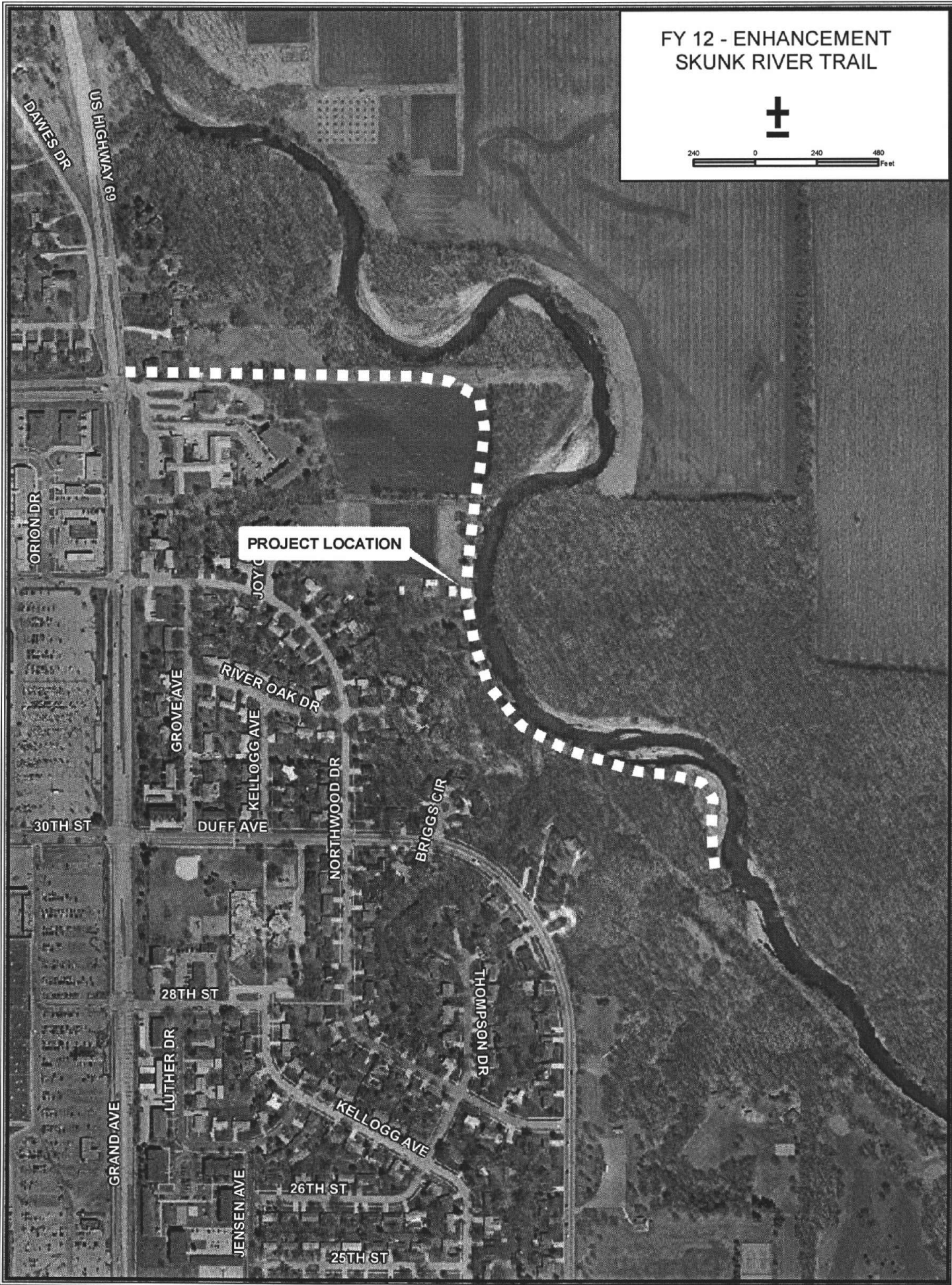
Total Estimated Cost: \$ 200,000

Federal-Aid: \$ 80,000

Local Match: \$ 120,000

Other: \$ ---

FY 12 - ENHANCEMENT  
SKUNK RIVER TRAIL



PROJECT LOCATION

DAWES DR  
US HIGHWAY 69

ORION DR

GROVE AVE

RIVER OAK DR

KELLOGG AVE

NORTHWOOD DR

BRIGGS CIR

THOMPSON DR

KELLOGG AVE

26TH ST

25TH ST

GRAND AVE

LUTHER DR

28TH ST

DUFF AVE

30TH ST

**Ames Area Metropolitan Planning Organization**  
 FY 2008-2011 TIP Summary of FHWA Program

<b>Surface Transportation Program</b>				<b>Total Cost x 1000</b>				<b>Federal Participation x 1000</b>			
<b>Location</b>	<b>Termini</b>	<b>Sponsor</b>	<b>Type of Work</b>	<b>2009</b>	<b>2010</b>	<b>2011</b>	<b>2012</b>	<b>2009</b>	<b>2010</b>	<b>2011</b>	<b>2012</b>
Areawide	--	City of Ames	SUDAS	3.1	3.1	3.1	3.1	3.1	3.1	3.1	3.1
Areawide	--	City of Ames	Pavement Management	5.2	5.2	5.2	5.2	5.2	5.2	5.2	5.2
Ames MPO O&M	--	City of Ames	Maintenance	4,348				1,078			
13th Street	UPRR to Stange Road	City of Ames	Pavement Rehabilitation	1,300				1,032			
Long Range Transportation Plan Update	2010-2035	City of Ames	Transportation Planning		400				231		
G.W. Carver Avenue	Stange Rd. to Bloomington	City of Ames	Pavement Rehabilitation		860				688		
Grand Avenue	South 16th Street to Squaw Creek Drive	City of Ames	Grade and Pave			8,000				1,032	
Lincoln Way	South Duff Avenue to South Skunk River	City of Ames	Pavement Rehabilitation				860				688
Target Funding		FHWA						1,040	1,040	1,040	1,040

<b>Enhancements</b>				<b>Total Cost x 1000</b>				<b>Federal Participation x 1000</b>			
<b>Location</b>	<b>Termini</b>	<b>Sponsor</b>	<b>Type of Work</b>	<b>2009</b>	<b>2010</b>	<b>2011</b>	<b>2012</b>	<b>2009</b>	<b>2010</b>	<b>2011</b>	<b>2012</b>
Skunk River Trail	Hunziker Youth Sports Complex to SE 16th Street	City of Ames	Ped/Bike Paving	200				80			
Skunk River Trail	E. 13th Street to Carr Pool	City of Ames	Ped/Bike Paving		225				80		
Skunk River Trail	E. Lincoln Way to E. 13th Street	City of Ames	Ped/Bike Paving			345				80	
Skunk River Trail	Inis Grove Park to Bloomington Road	City of Ames	Ped/Bike Paving				200				80
Target Funding		FHWA						80	80	80	80

**Federal Transit**

**Administration**

**Section**

Fund Type	System	Project Description	Vehicle Identification or Remarks	Type Exp	Type Project	Total Cost				Federal Participation				2009 STA
						2009	2010	2011	2012	2009	2010	2011	2012	
5307/STA 5303	CyRide AAMPO	General Operations Planning		O P		6,039,168 33,285	6,341,126 34,949	6,658,183 36,697	6,991,092 38,532	1,610,455 26,628	1,713,131 27,959	1,798,788 29,357	1,888,727 30,825	470,773
5316 5316 5316	CyRide CyRide CyRide	<b>Job Access &amp; Reverse Commute</b> East 13th/LincolnWay/Dayton Commercial/Industrial Area Brown Route Frequency/Hours Expansion Yellow Route Expansion		O O O	Exp Exp Exp	329,700 46,305 4,851	346,185 48,620 5,094	363,494 51,051 5,348	381,669 53,604 5,616	164,850 23,153 2,426	173,093 24,310 2,547	181,747 25,526 2,674	190,834 26,802 2,808	
5317/CMAQ	CyRide	<b>New Freedom</b> Two Expansion 40' HD Hybrid buses (\$100,000 5317, \$915,200 CMAQ)		C	Exp	1,144,000				1,015,200				
5310 5310	CyRide CyRide	<b>Elderly &amp; Persons with Disabilities Program</b> Contracted paratransit service Transit Amenities		O C	Exp Rep	153,399 50,000	159,535 52,000	165,916 54,080	172,553 56,243	122,719 40,000	127,628 41,600	132,733 43,264	138,042 44,995	
5309/Iowa Power Fund	CyRide	<b>Replacement Buses and Bus Equipment</b> 14 - 40' HD Hybrid Electric buses		C	Exp	8,008,000				6,646,640				
5309	CyRide	13 - 40' HD buses (Cameras)	926, 927, 933, 934, 941, 942, 943, 967, 980, 981, 983, 985, 990	C	Rep	4,602,000				3,819,660				
5309	CyRide	3 - 158" Light Duty (Diesel, Urban, Cameras)	949, 960, 961	C	Rep	240,000				199,200				
5309	CyRide	<b>Security: Human Health/Safety Threats</b> Scissor Lift for Shop/Maintenance		C	Exp	35,000				28,000				
5309 5309/IG	CyRide CyRide	Facility Cameras/Proximity Card Access Steam clean area; hoist and floor repair	20 Cameras(20*\$1,333) ; 10 Proximity Cards	C C	Exp Rep	56,660 640,000				45,328 512,000				
5309 5309 5309	CyRide CyRide CyRide	Vehicle Security System Camera Replacement Storage area air handling replacement Stange Rd/Univ Village traffic control	2010: (\$8,000*13), 2011: (\$8,000*14)	C C C	Rep Rep Exp		104,000	112,000 150,000			83,200	89,600 120,000	144,000	
5339 5309 5309 5309 5309	CyRide CyRide CyRide CyRide CyRide	<b>Direct Earmarks</b> Alternative Analysis Study - Orange Route Garage Rehab and Expansion Phase III (Direct Earmarks) AVL technology, web planner, passenger counters Resurface ISC Commuter Parking ISU North Intermodal Facility		P C C C C	Exp/Reh Exp Reh Exp	200,000 564,300	1,000,000 1,632,540 1,000,000	500,000		160,000 451,440	800,000 1,175,429 720,000	400,000	12,500,000	
Total Capital					Total Capital	22,146,668 15,339,960	10,724,049 3,788,540	23,721,769 16,441,080	7,879,308 236,243	14,867,698 12,757,468	4,888,896 2,820,229	15,323,689 13,152,864	2,467,033 188,995	